



WBMT Global Survey

Helen Baldomero
Cape Town
November 2014

*Worldwide Network for Blood and Marrow Transplantation
NGO in official relations with World Health Organization*



WBMT Survey Sheet



A simple questionnaire to report the annual overview of transplant activity by:

- Team/country
- diagnosis
- donor type
- stem cell source
- 1 survey per year
- Data is either provided by a regional transplant society, National Registry or at the team level



Provides us with an rapid overview of annual data

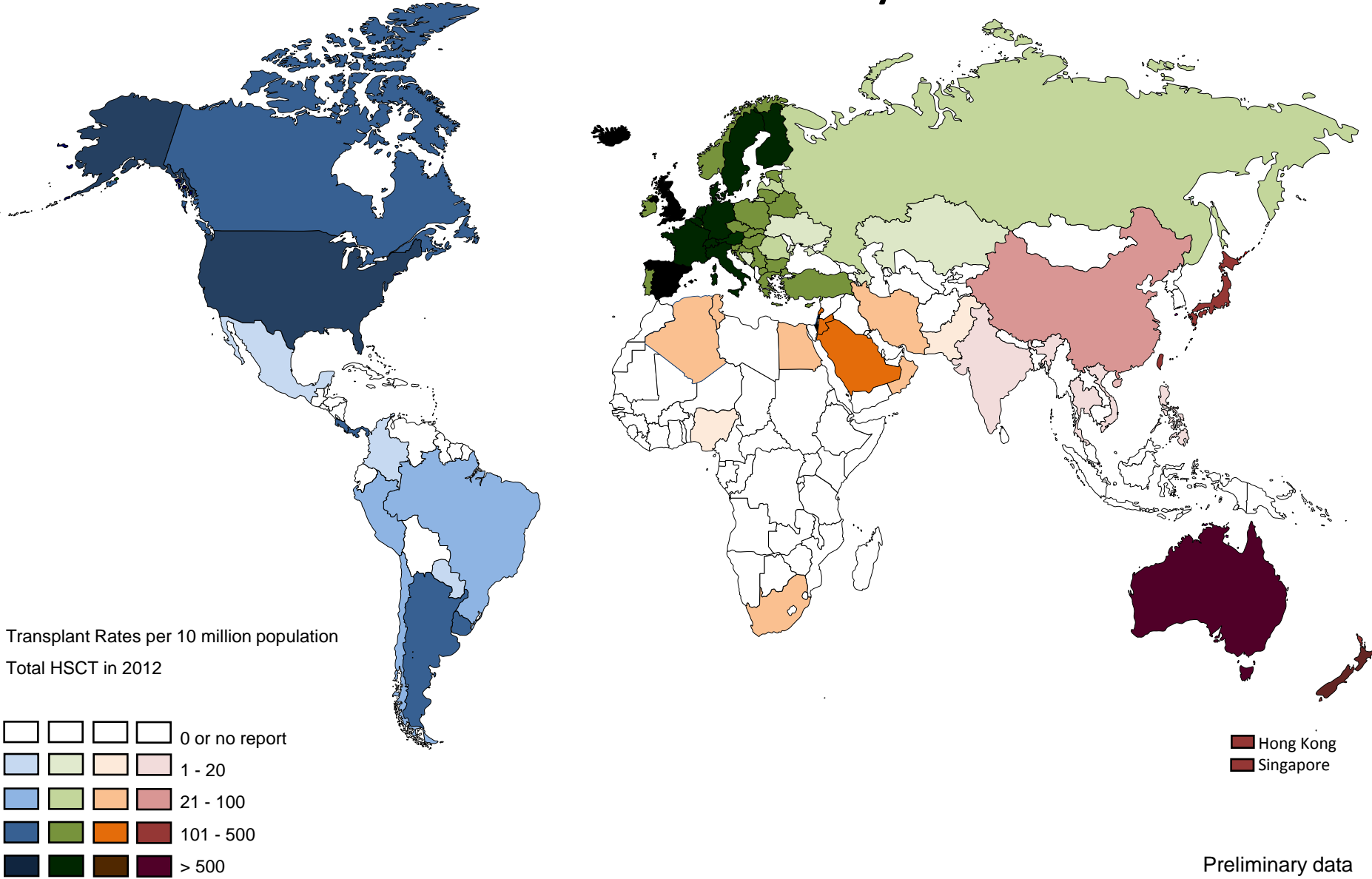


It is not part of an outcome registry

Country/Hospital:..... National/Regional group:.....		WBMT SURVEY ON TRANSPLANT ACTIVITY 2011																	
No. Teams reporting:..... No. Teams not reporting:..... (known to transplant but do not report)		NUMBER OF PATIENTS RECEIVING FIRST TRANSPLANTS ONLY IN 2011																	
Indication	WBMT	Allogeneic										Autologous			Total				
		Family						Family total	Unrelated			Unrelated total	Total						
		HLA - id sibling		non - id*		twin			BM	PBSC	Cord		BM	PBSC	Cord	Allo	auto	Total	
BM	PBSC	Cord	BM	PBSC	Cord	BM	PBSC		BM	PBSC	Cord	BM	PBSC	Cord					
Total Leukemia																			
Leukemias	Total AML																		
	AML 1st CR																		
	non 1st CR																		
	Total ALL																		
	ALL 1st CR																		
	non 1st CR																		
	Total CML																		
	CML 1st cP																		
	not 1st cP																		
	Other Leukemia																		
	Total MDS/MPS (incl. combined MDS/MPS)																		
	MDS incl. Sec AL																		
MPS																			
CLL incl. PLL																			
Total LPD																			
LPD	Total Plasma Cell Disorder																		
	PCD - Myeloma																		
	PCD - other																		
	Total Lymphoma																		
	HD																		
	NHL																		
Other LPD																			
Total Solid tumors																			
Solid tumors	Neuroblastoma																		
	Germ cell tumor																		
	Breast Cancer																		
	Ewing																		
	Other solid tumor																		
Total Non-malignant dis.																			
Non-malignant disorders	Total Bone Marrow Failure																		
	BMF - SAA																		
	BMF - other																		
	Hemoglobinopathy																		
	Primary Immune Deficiency																		
	Inherited Dis of Metabolism																		
	Auto Immune Disease																		
Other Non Malignant Disease																			
Other																			
TOTAL (patients)																			

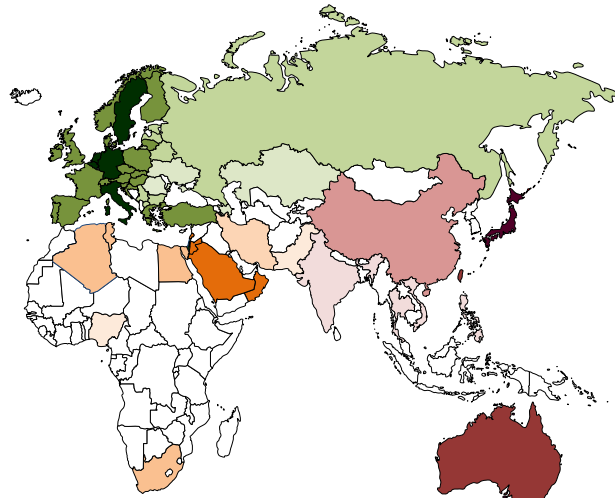
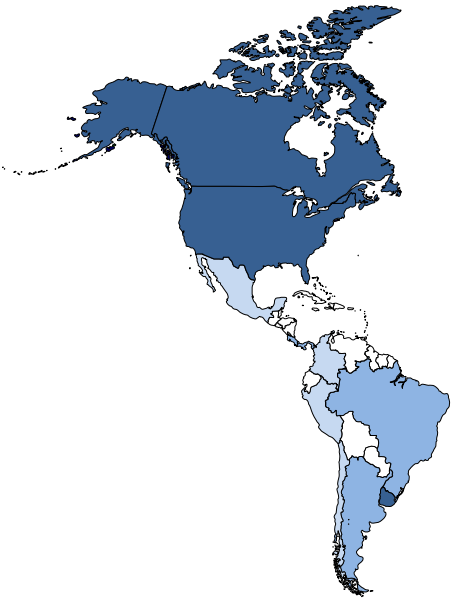
EBMT CIC No. / CIBMTR Code / APBMT No / LABMT No. (if member):.....

WBMT Global Survey 2012



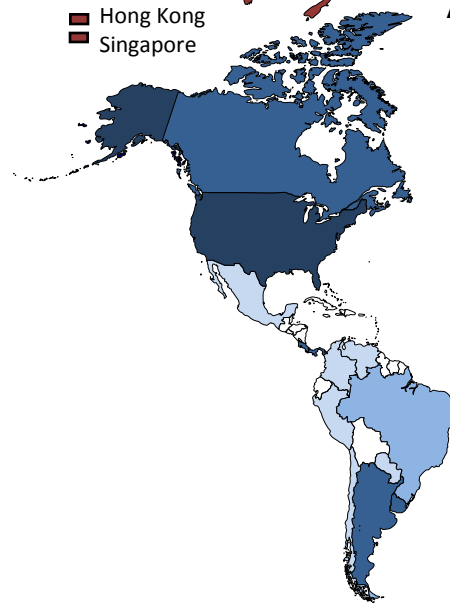
Preliminary data

WBMT Global Survey 2012

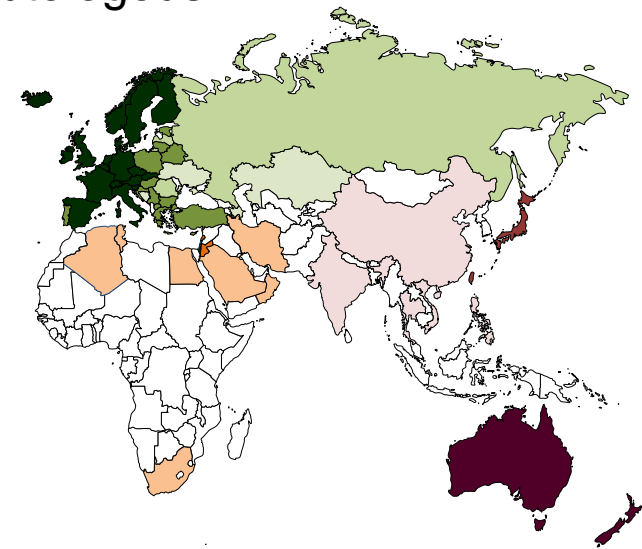


Allogeneic

■ Hong Kong
■ Singapore



Autologous

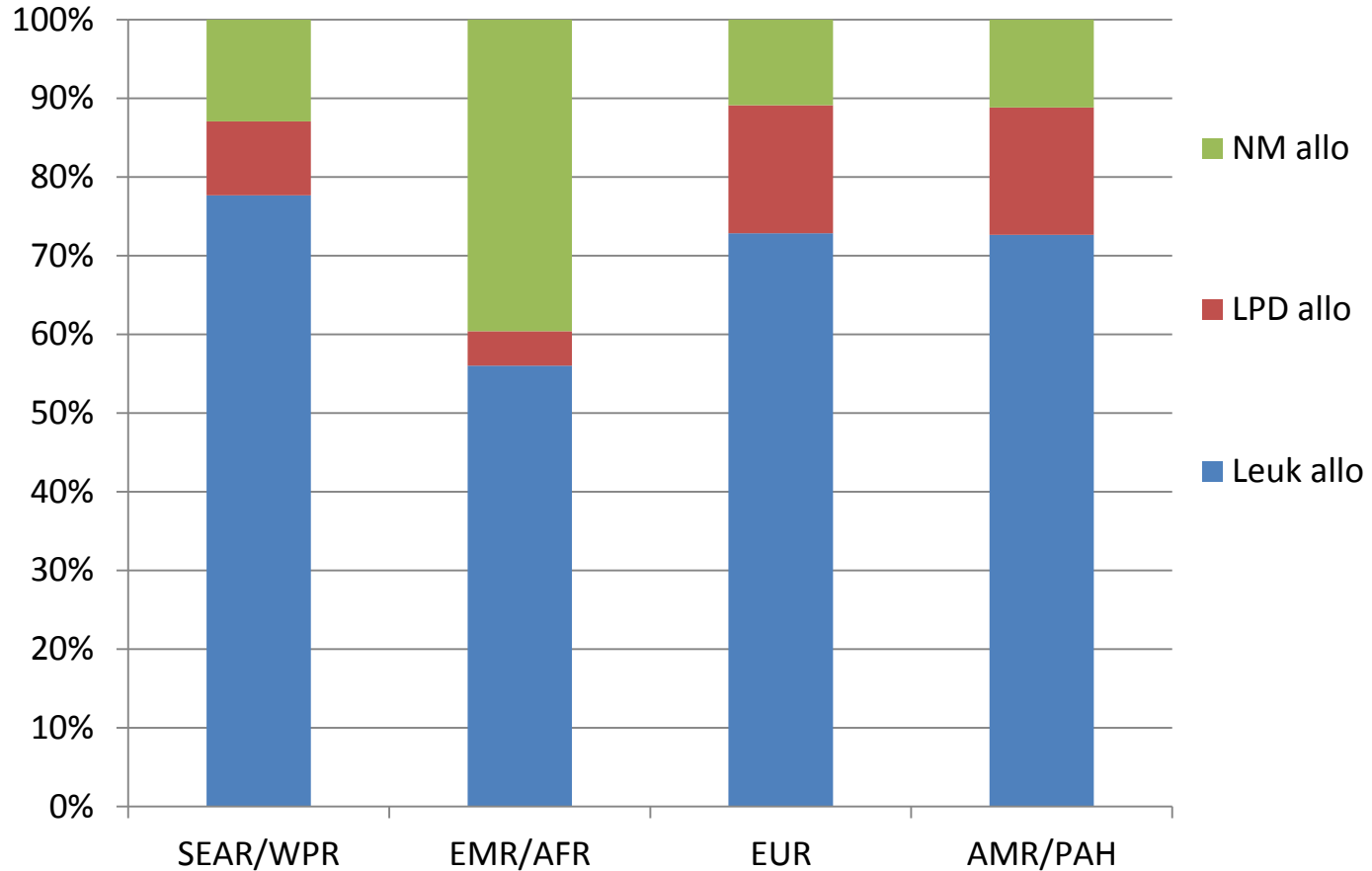


■ Hong Kong
■ Singapore



WBMT Global Survey 2012

Regional variation: allogeneic HSCT



Preliminary data



Global Activity Survey: 2006 – 2012

Allogeneic	2006	2012		
Acute Leuk/other leuk/MDS/MPS	12 502	20 241	↑	62%
Chronic Leuk	1 890	1 827	-	
Lymphoproliferative disorders	3 219	4 234	↑	32%

Overall number of transplants 2006 – 2012: 389 419

Allogeneic HSCT: 178 645

Family: 89 084

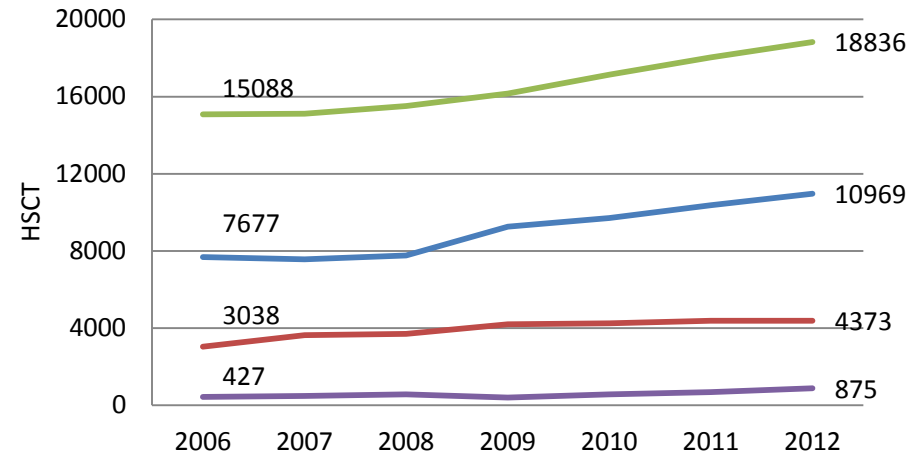
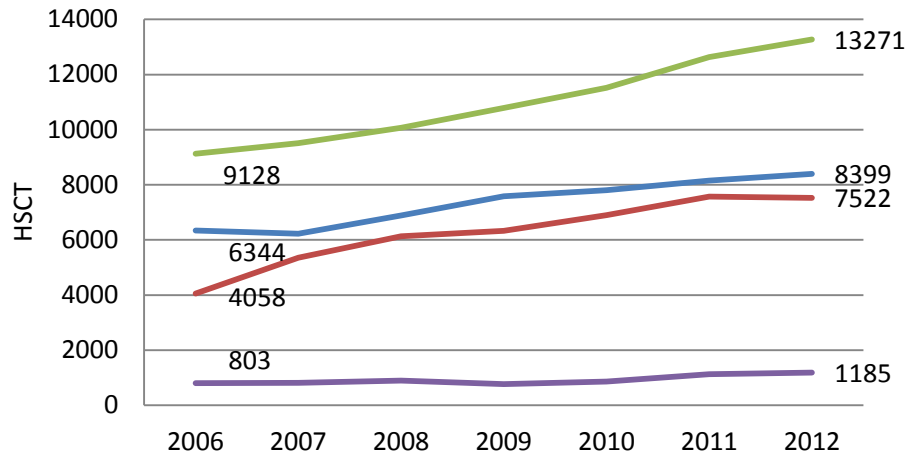
Unrelated: 89 561

Autologous HSCT: 210 774

Solid Tumors	2 560	2 721	↑	6%
Non Malignant disorders	193	302	↑	56%
Others	96	41	↓	57%
Total	26 230	35 053	↑	34%
Total	46 563	65 430	↑	41%

2012 preliminary data

Trend by region: 2006-2012



Allogeneic HSCT: % increase since 2006	
EUR	45%
AMR/PAH	32%
SEAR/WPR	85%
EMR/AFR	47%

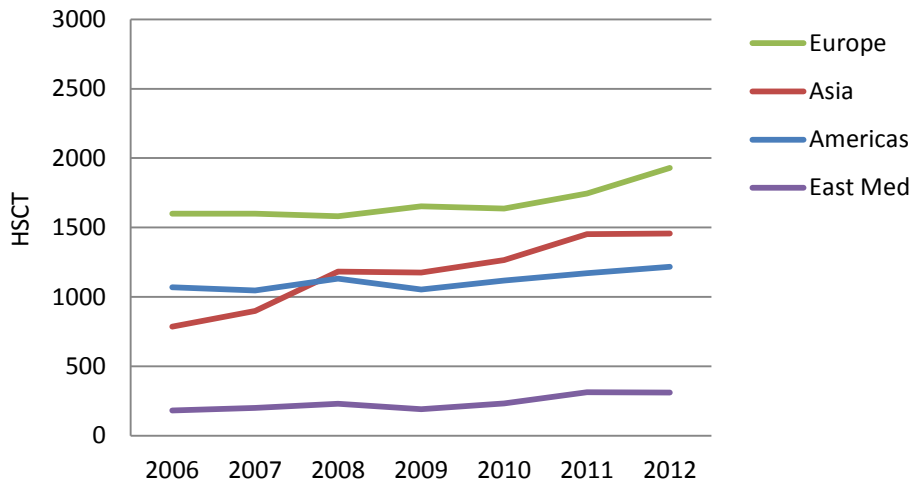
Autologous HSCT: % increase since 2006	
EUR	25%
AMR/PAH	43%
SEAR/WPR	44%
EMR/AFR	105%

Preliminary data

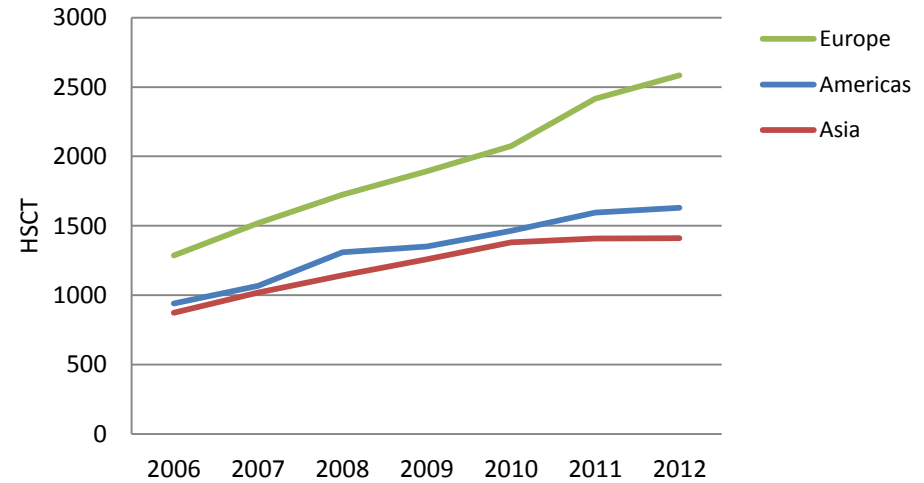


Trend over 7 years: AML and BMF

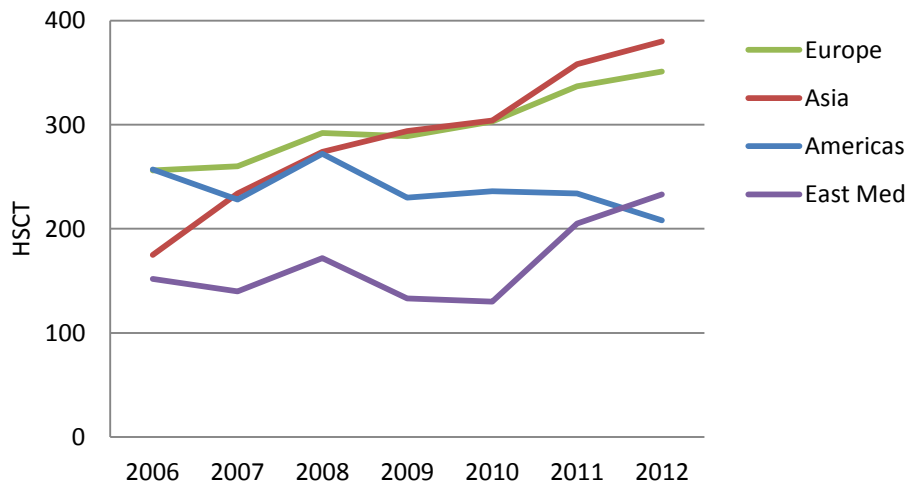
AML Family



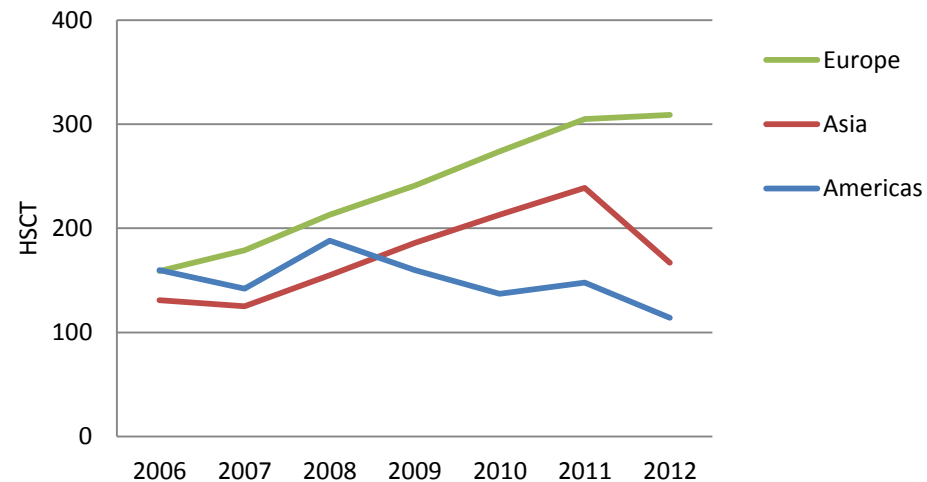
AML Unrelated



BMF Family



BMF Unrelated



Data currently reported to the WBMT via the EBMT transplant activity survey

7 reporting teams in 2013

- 6 South Africa
 - Cape Town (3), Durban, Johannesburg, Pretoria
- 1 Nigeria
 - Benin City

- Total transplants in 2013: 219 (238 Tx.)
- Allogeneic: 94 patients (104 Tx.)
- Autologous: 125 patients (134 Tx.)
- BM: 12 Tx. (9 allo)
- PB: 225 Tx. (94 allo)
- CB: 1 Tx.

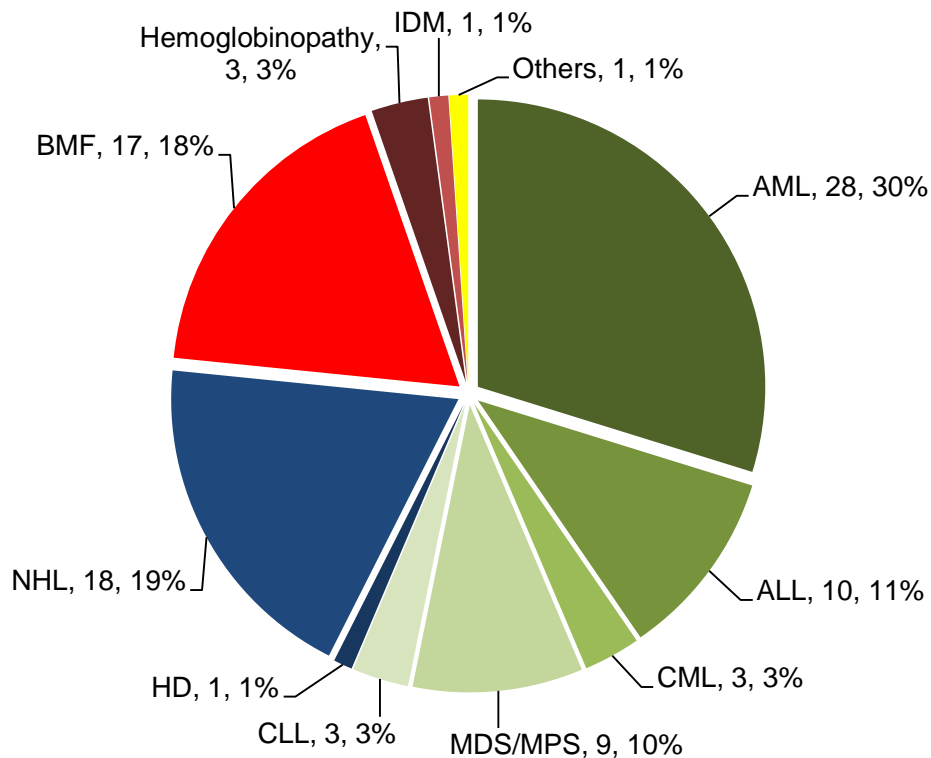


EBMT SURVEY ON TRANSPLANT ACTIVITY 2013

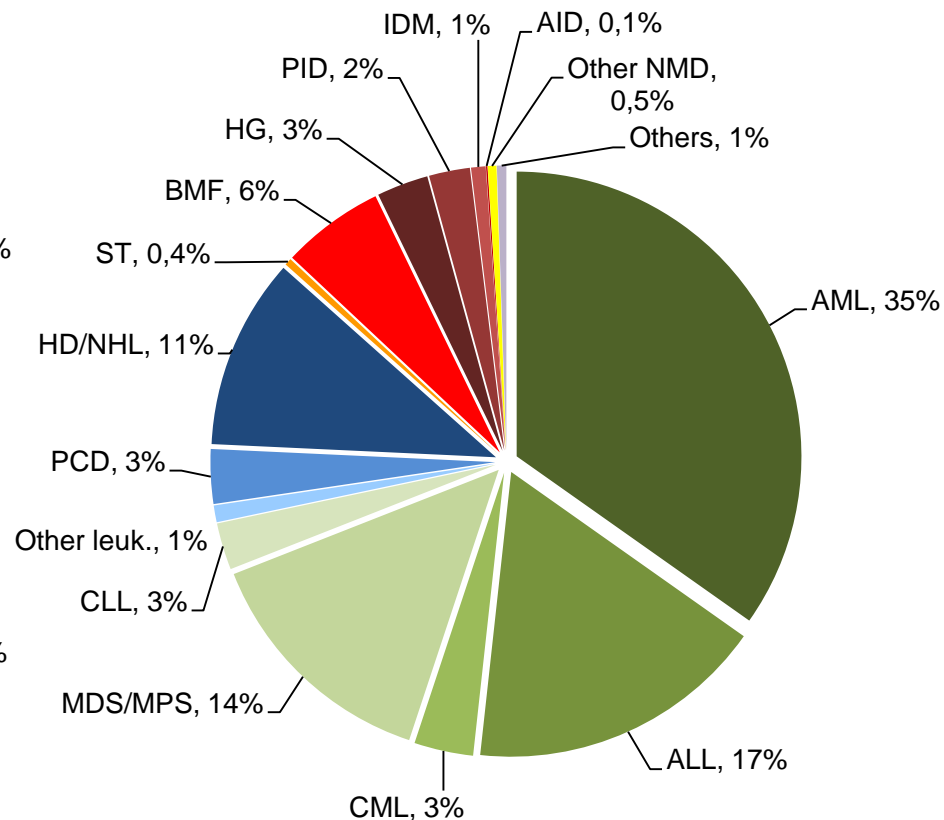
Table 1: Report the total number of patients receiving their 1st allogeneic and/or 1st autologous transplant in your centre in 2013 according to indication, donor type and stem cell source.
 Table 2: Report all other non-1st transplants here. Table 3: Report the total number of NMA and OLA here.
 Table 4: Report any HSC/MSC therapies here and on the separate cellular therapy survey.
 Help with reporting your data can be found in the guidelines.

		NUMBER OF PATIENTS RECEIVING EBMT TRANSPLANTS ONLY IN 2013												Total allo/ auto/ auto				
		Allogeneic						Autologous			Total							
		HLA- id sibling		HLA non- id relative		Twin		Unrelated			Allo		Auto		Total			
Table 1		BM	PB/SC	Cord	BM	PB/SC	Cord	BM	PB/SC	Cord	BM	PB/SC	Cord	BM	PB/SC	Cord		
Leukemia	AML 1st CR																	
	non 1st CR																	
	ALL 1st CR																	
	non 1st CR																	
	CMV 1st tP																	
	not 1st tP																	
	MDS or MDMPN																	
	MPN																	
	CLL incl PLL																	
	PCD - Myeloma																	
LPC	PCD - other																	
	HD																	
	NHL																	
Solid tumors	Neuroblastoma																	
	Soft tissue sarcoma																	
	Germ cell tumors																	
	Breast Cancer																	
	Ewing																	
	Other solid tumors																	
Non-Malignant disorders	BM aplasia - SAA																	
	BM aplasia - other																	
	Hemoglob. - thalassemia																	
	Hemoglob. - sickle cell																	
Non-Malignant disorders	Primary immune deficiencies																	
	Ink. disorders of metabolism																	
	Auto immune disease																	
	Others																	
	TOTAL 1st Transplants																	
	Number pediatric patients: age <18 at transplant																	
Table 2: Non 1st transplants performed in 2013																		
	Retransplants																	
	Additional transplants																	
	TOTAL All Transplants																	

AFBMT: Main Indication: allogeneic HSCT

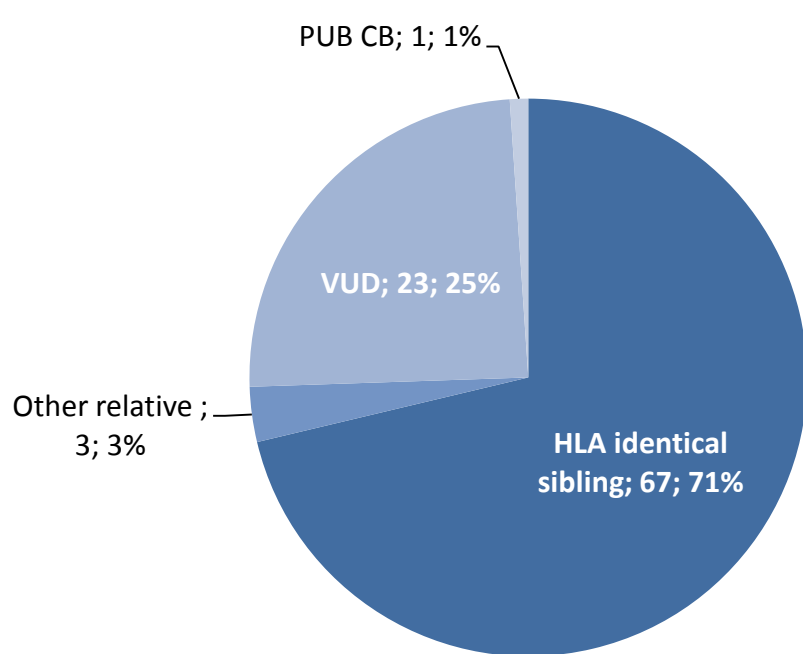


AFBMT 2013

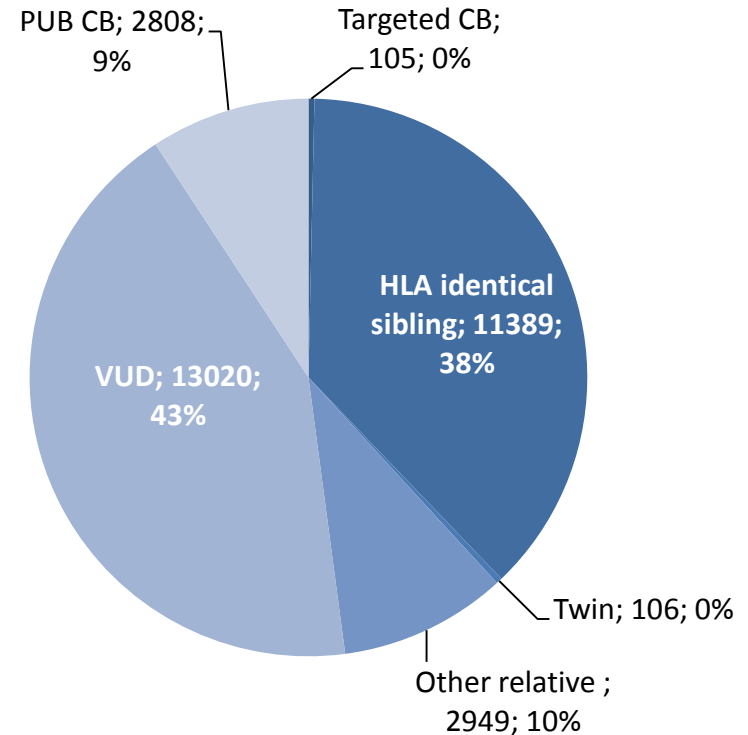


Global 2012

AFBMT: Main Indication: donor type

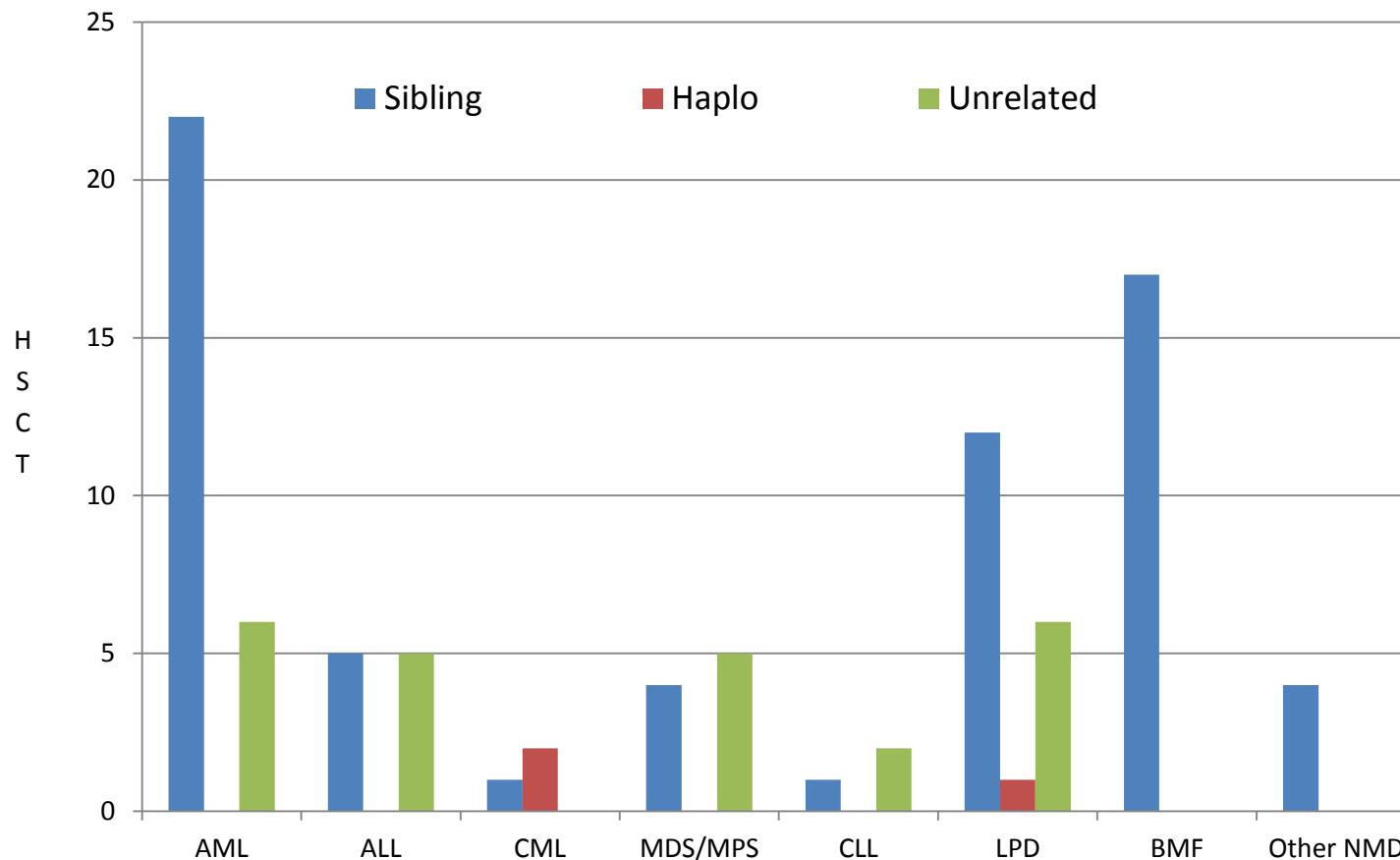


AFBMT 2013



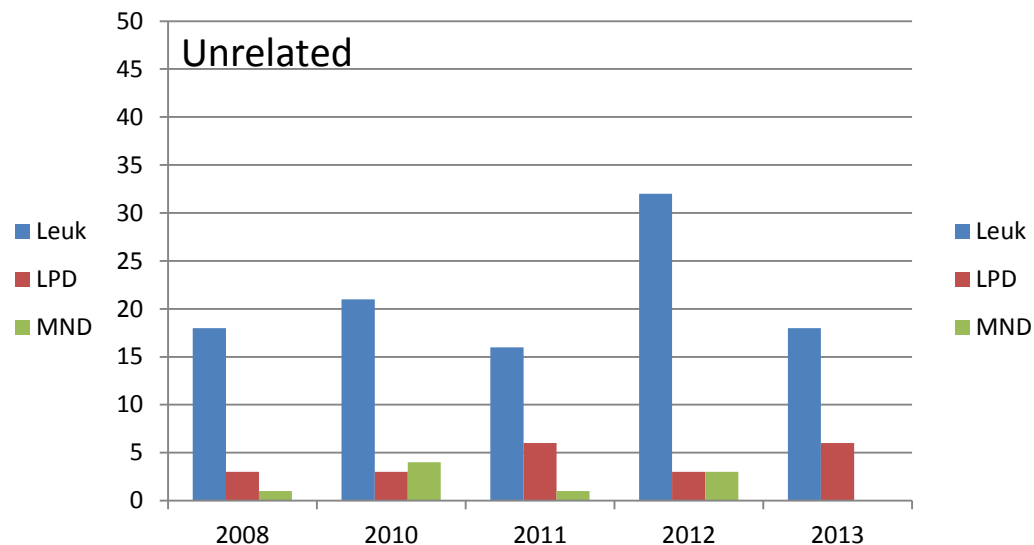
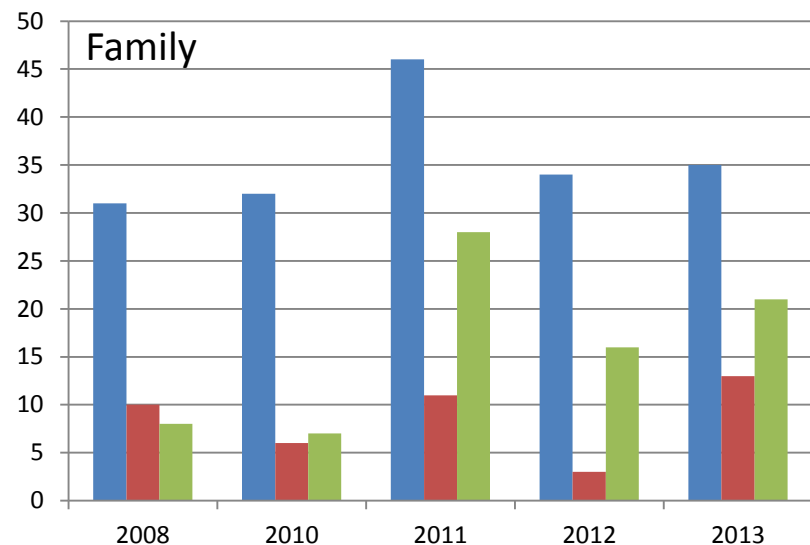
Global 2012

AFBMT: Donor type by indication: 2013



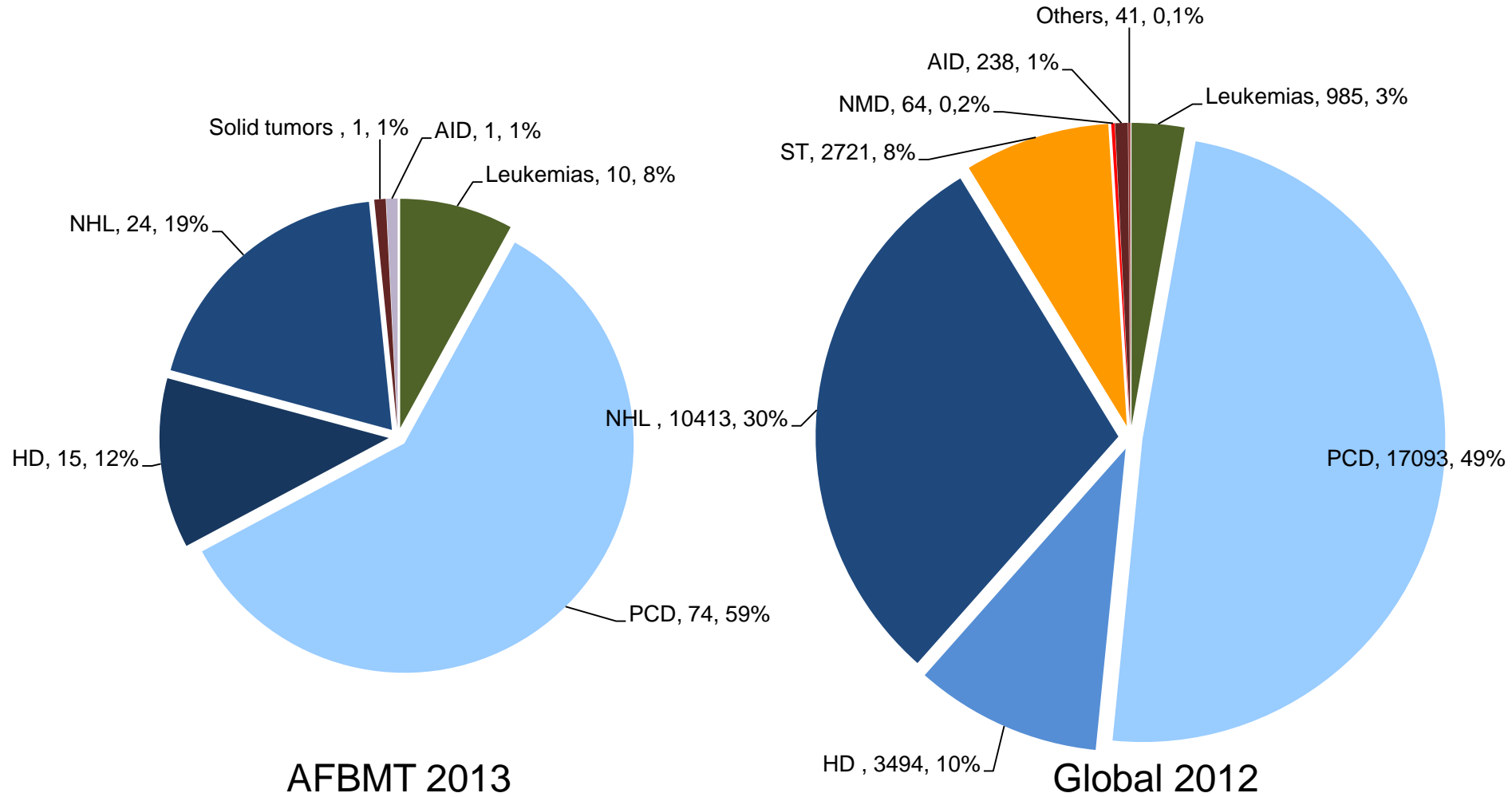
AFBMT: Main Indication:allogeneic HSCT

Trends over the years by disease and donor type

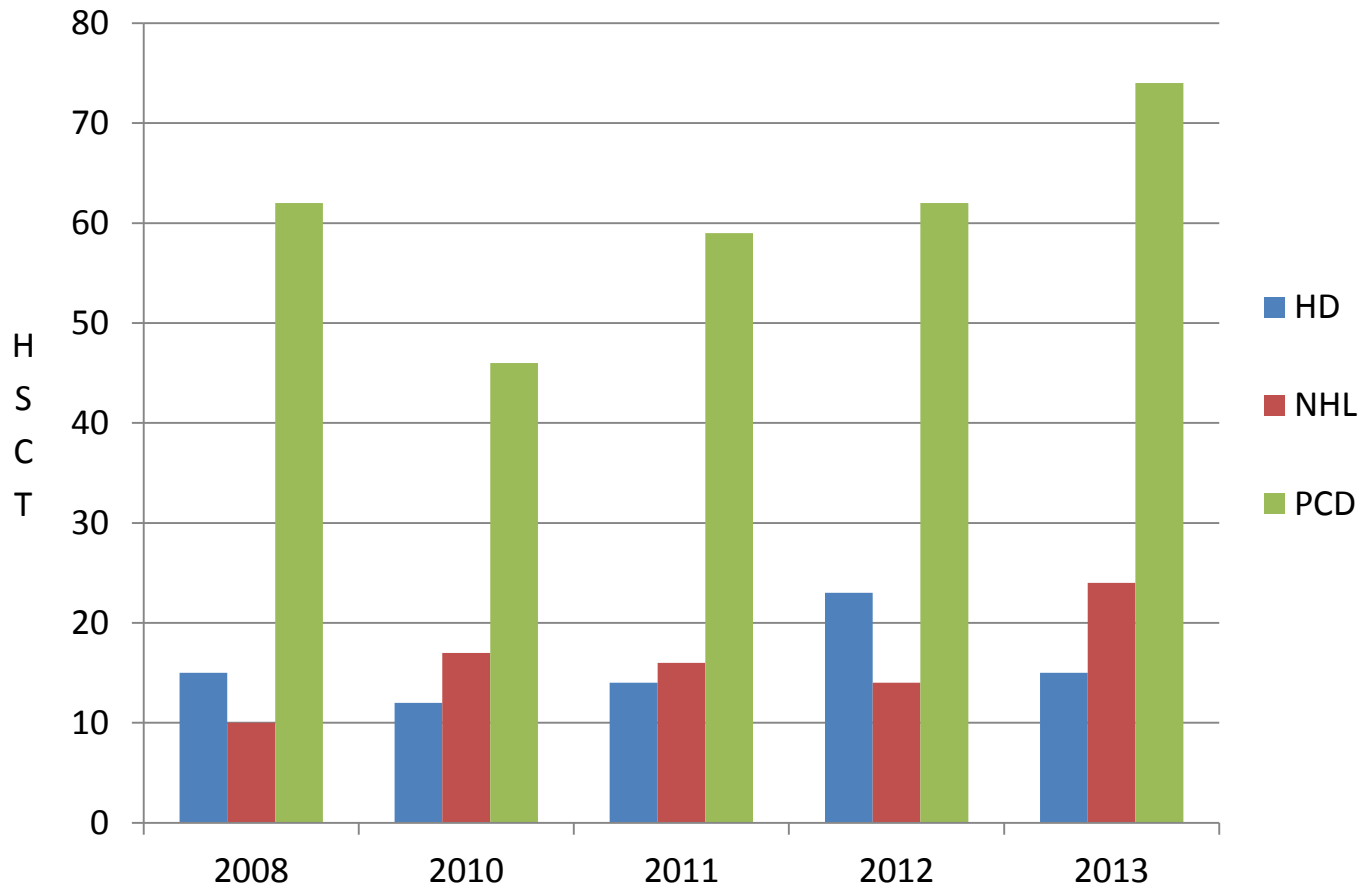










AFBMT: Main Indication: autologous HSCT



AFBMT: Main Indication: autologous HSCT



Conclusion and the future

-  Reporting of data is an essential part of the transplant process
-  We need to share our data and experiences in order to move forward
-  Infrastructure exists for transplantation = exists for data reporting
-  Try and encourage non reporting centres/countries to report
 -  By providing support
 -  Data reporting mechanisms



Thank you

Worldwide Network for Blood and Marrow Transplantation